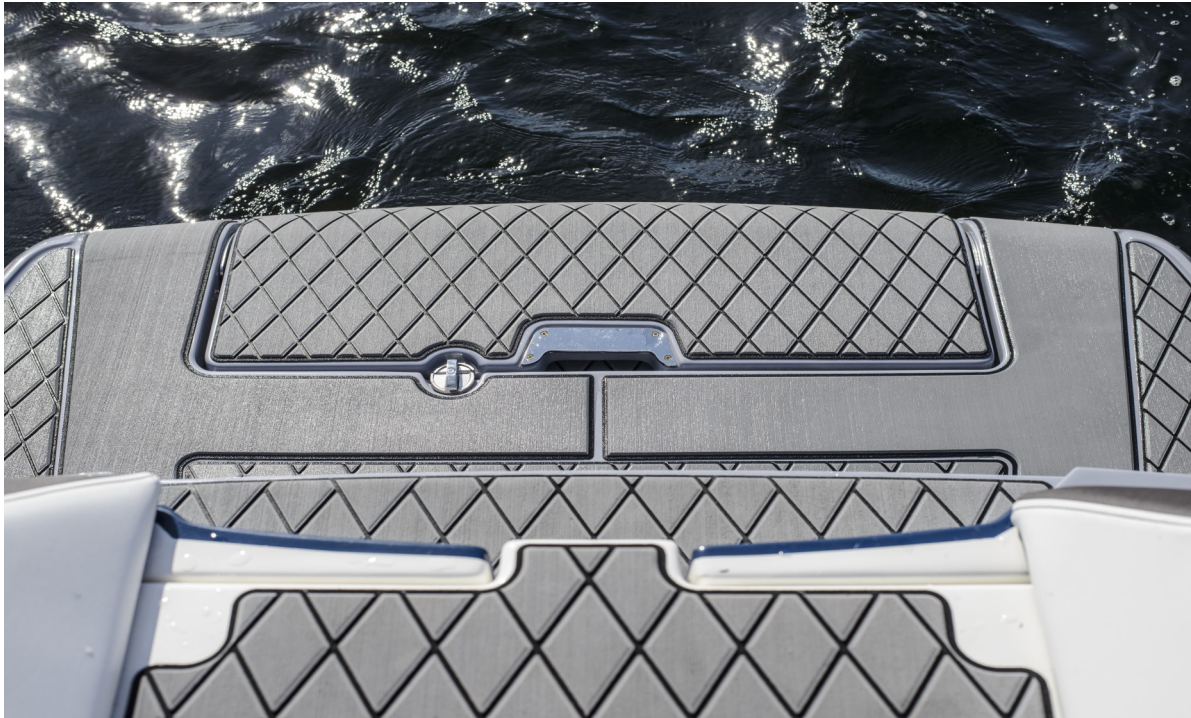


SeaDek®

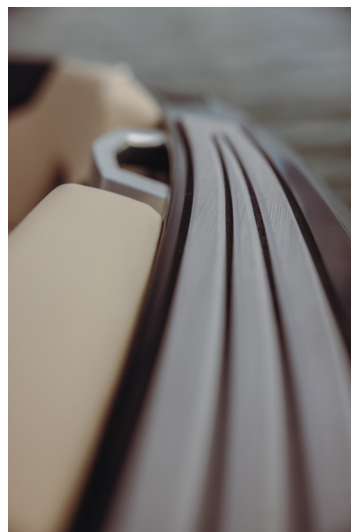


ONE PRODUCT, ENDLESS POSSIBILITIES

SeaDek is made from a special UV stabilised foam blend designed to handle the tough conditions of life on the water. It's closed cell and non-absorbent, so it won't soak up water, and it stands up well to sun, salt and heat, helping to prevent fading, cracking over time. It provides a durable non-slip and comfortable alternative to carpet and non-skid, making it ideal for marine use. SeaDek is fully customisable, with endless possibilities for patterns, logos and designs.

While SeaDek is built to last, it's not indestructible. Sharp tools, heavy impacts or harsh chemicals can still cause damage. With the right care though, SeaDek will keep your trailer boat looking great for years to come.

[Visit www.bluskyproducts.com.au for installers](http://www.bluskyproducts.com.au)



BENEFITS OF SEADEK

Proven performance in Australian conditions for more than a decade

Exceptional traction when wet or dry

Unparalleled comfort and cool underfoot

Shock absorbent

Protects against scratches, chips & dents

Highly stain resistant

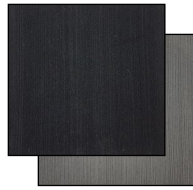
Self adhesive backing for easy installation

Increases the value of your boat

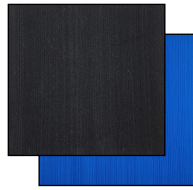
Stocked Dual Layers



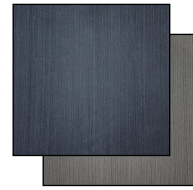
Black Over
Mocha □●



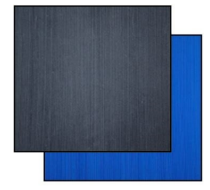
Black Over
Storm Grey □●



Black Over
Bimini Blue □●



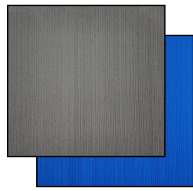
Dark Grey Over
Storm Grey □●



Dark Grey Over
Bimini Blue □●



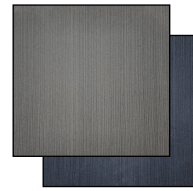
Storm Grey
Over Navy □●



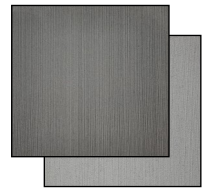
Storm Grey Over
Bimini Blue □●



Storm Grey
Over Black □●



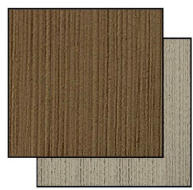
Storm Grey Over
Dark Grey □●



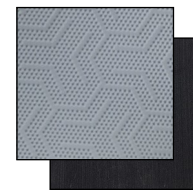
Storm Grey Over
Cool Grey □●



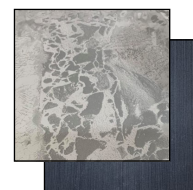
Terra Over
Dark Grey □●



Dune Over
Cream □●



Storm Grey Over
Black □‡



Storm Grey Over
Dark Grey □⌘



Camel Over
Mocha □ö

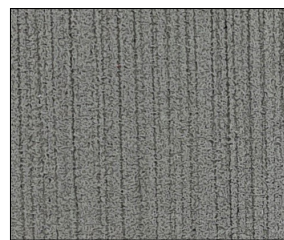


Mocha Over
Black □●

Please note:

Colours are indicative
only

● **Brushed**



‡ **HD**



Product Specifications

Thickness	□	6mm
Finish	●	Brushed
	‡	HD 8mm
	⌘	Real Tree
	ö	Wood Grain

⌘ **Real Tree**



ö **Wood Grain**

